



**SMART
AND TO THE
POINT.**

SEA BREAKER™

Long range (up to 300 km) Naval & Land defense system

Innovative Weapon System to Dominate the Modern Battle Field Challenges

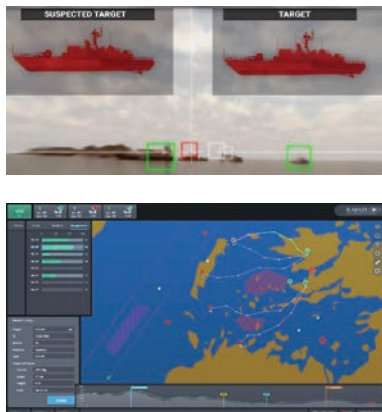
SEA BREAKER® - Long range, autonomous precision-guided weapon system, enabling significant attack performance against a variety of high-value targets, both at sea and on land, with minimal collateral damage. The system is resilient to GNSS-denied arenas, electronic warfare and decoys.

SEA BREAKER is the latest generation of RAFAEL's precision-strike solutions, based on operational experience and cutting-edge technologies.

Benefits

- Highly effective and lethal against a variety of targets in maritime and land strike scenarios
- Long range (300 km) evasive trajectory, TERCOM over land and sea-skimming
- Compact dimensions & light weight - suitable for small naval vessels and mobile vehicles
- Multiple missions at sea & land
- Interoperability - simple and secure integration with Command & Control systems
- Affordable - Low unit cost, LCC and OPEX
- Fully-autonomous with man-in-the-loop option
- Low collateral damage - Auto Target Recognition and man-in-the-loop backup





Mission Planing



SEA BREAKER

Mission Effectiveness

Full Sphere defense against various threats at sea and on land, for engagement of maritime targets at open sea, littorals and at port, and strike of high value land targets with low collateral damage to non-combatants.

The missile utilizes an advanced all-weather, Electro-Optic, IIR seeker, based on RAFAEL's innovative legacy of products and operationally-proven capabilities, such as scene-matching algorithms and ATR – Auto Target Recognition. The system complies with strict rules of engagement (ROE), allowing autonomous capability to identify and engage only hostile targets.

The system can counter modern anti-air & CIWS (Close-In-Weapon-Systems) defense onboard targets and in the arena, relying on late detection thanks to its passive seeker, Sea Skimming / nap of the earth, terrain-following flight pattern, and VLO (Very Low Observables) of the missile.

The missile approaches the target with high-'g' evasive maneuvers and has a saturation salvo attack capability, enhancing the missile's penetration against well-defended targets. **The effective warhead, combined with selective and accurate aim point**, can assure the desired damage to the target (from neutralization to destruction) with reduced risk to uninvolved parties in close proximity.

Main Capabilities

- Maritime dominance and A2/AD missions
- Deep strike at land
- GNSS-independent
- All-weather operation
- Discriminate hostile targets from non-combatants and decoys
- Low observability and passive
- Reduced demand from platform (size, interfaces)
- Advanced mission planning
- Man-in-the-loop for decision backup and BDA
- Open architecture, simple integration
- Mission agility

Technical Specifications

Length	~ 4 m
Weight	< 400 kg
Range	Up to 300 km
Velocity	High Subsonic
Warhead	250 lb
Seeker	Advanced IIR with AI
Navigation	Advanced INS & Modern anti-jam GPS
Control & Planning	Advanced planning and control system, interoperable with modern C2 systems
Two-Way Long-Range Datalink	In flight course change, abort option, BDA



LAND & NAVAL SYSTEMS DIVISION

Tel: +(972)73-335-2002
Fax: +(972)73-335-4093
Email: ind_mkt@rafael.co.il

HQ Tel: +(972)73-335-4714
Fax: +(972)73-335-4657
Email: Intl-mkt@rafael.co.il

www.rafael.co.il

SEA BREAKER™ is a Trademark of RAFAEL Advanced Defense Systems Ltd.
UNC. 65163-08/22/82-31945774 V1 ENG/ Studio | MSS